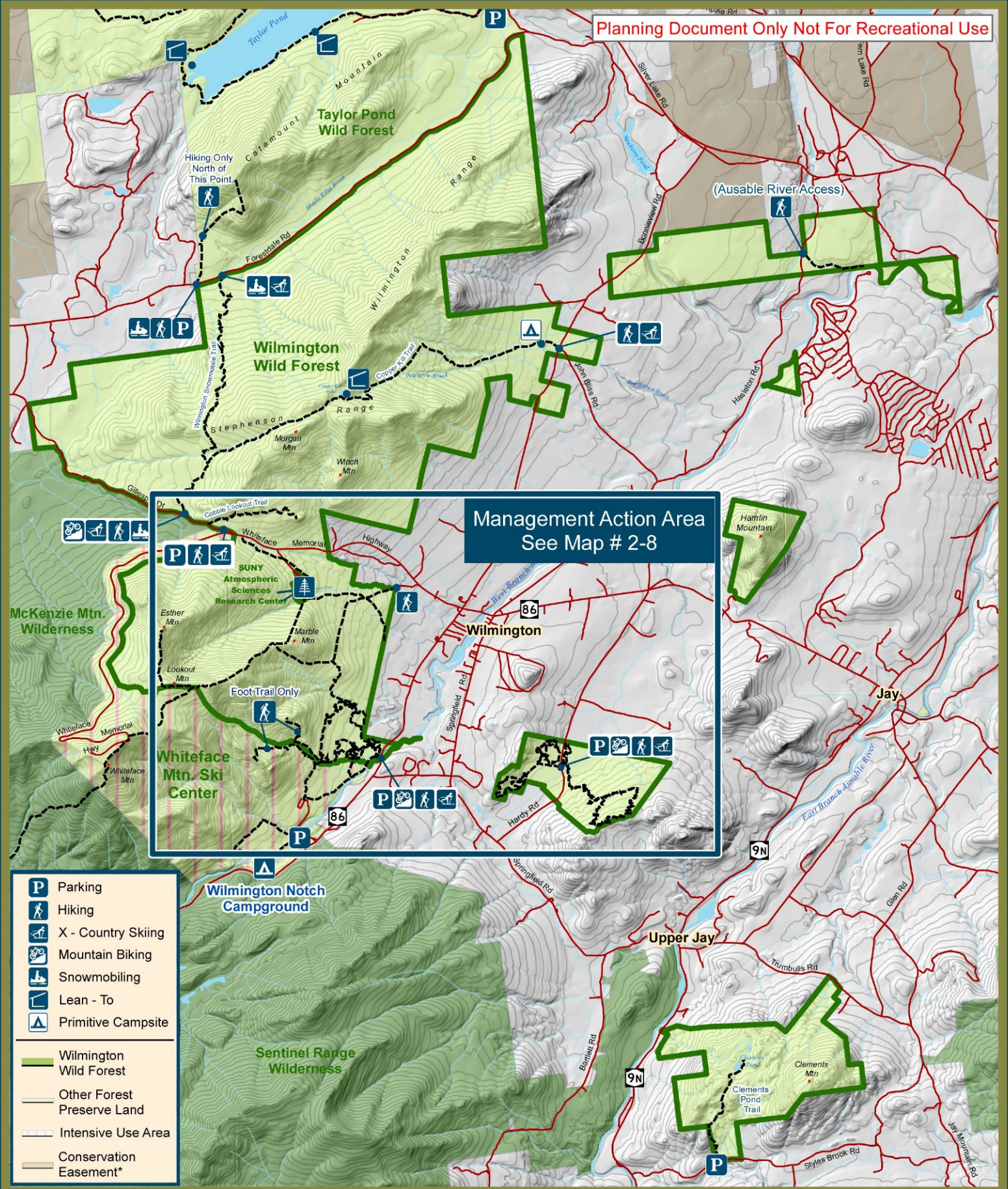


Planning Document Only Not For Recreational Use



Management Action Area
See Map # 2-8

- Parking
- Hiking
- X - Country Skiing
- Mountain Biking
- Snowmobiling
- Lean - To
- Primitive Campsite

- Wilmington Wild Forest
- Other Forest Preserve Land
- Intensive Use Area
- Conservation Easement*

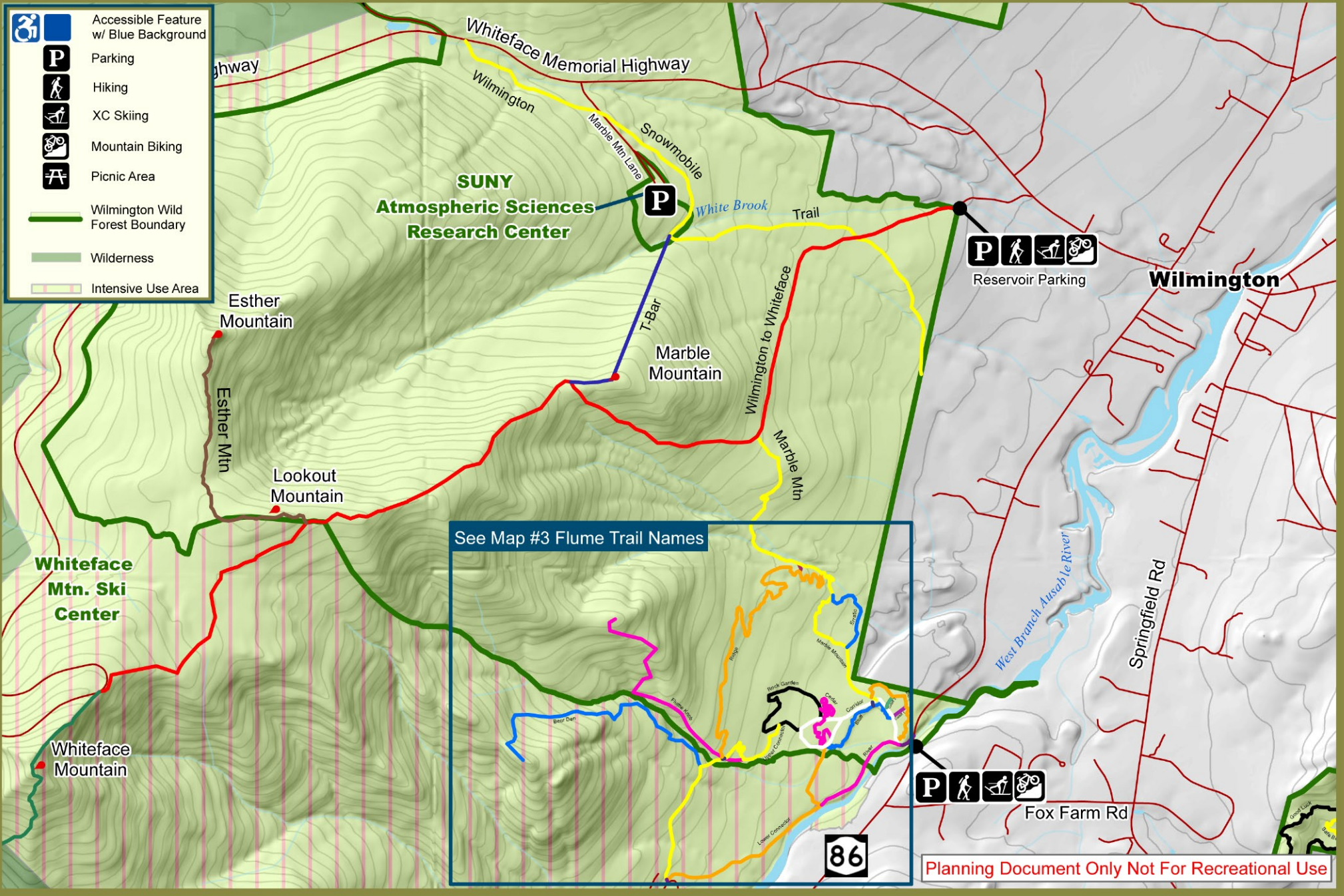


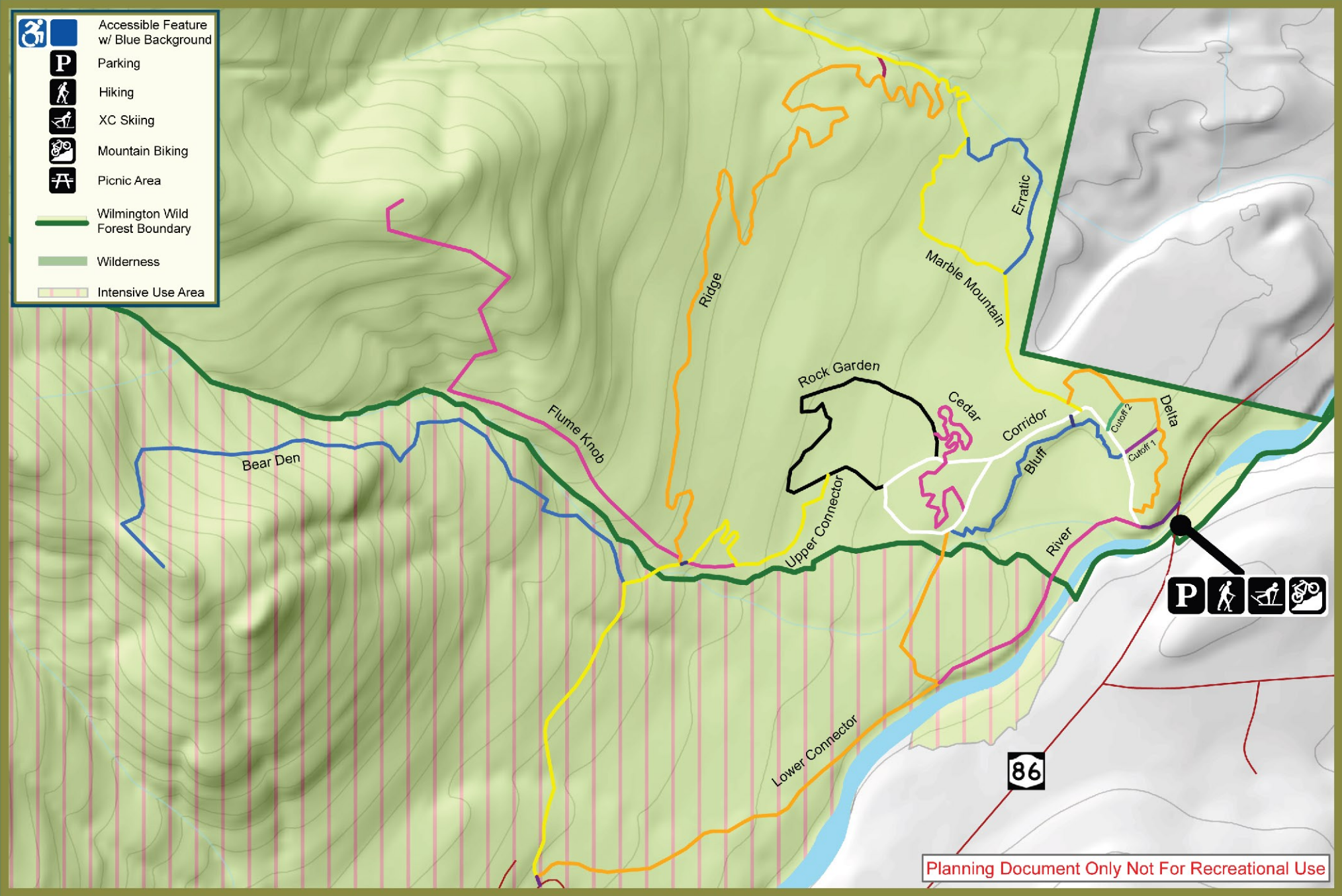
Department of Environmental Conservation

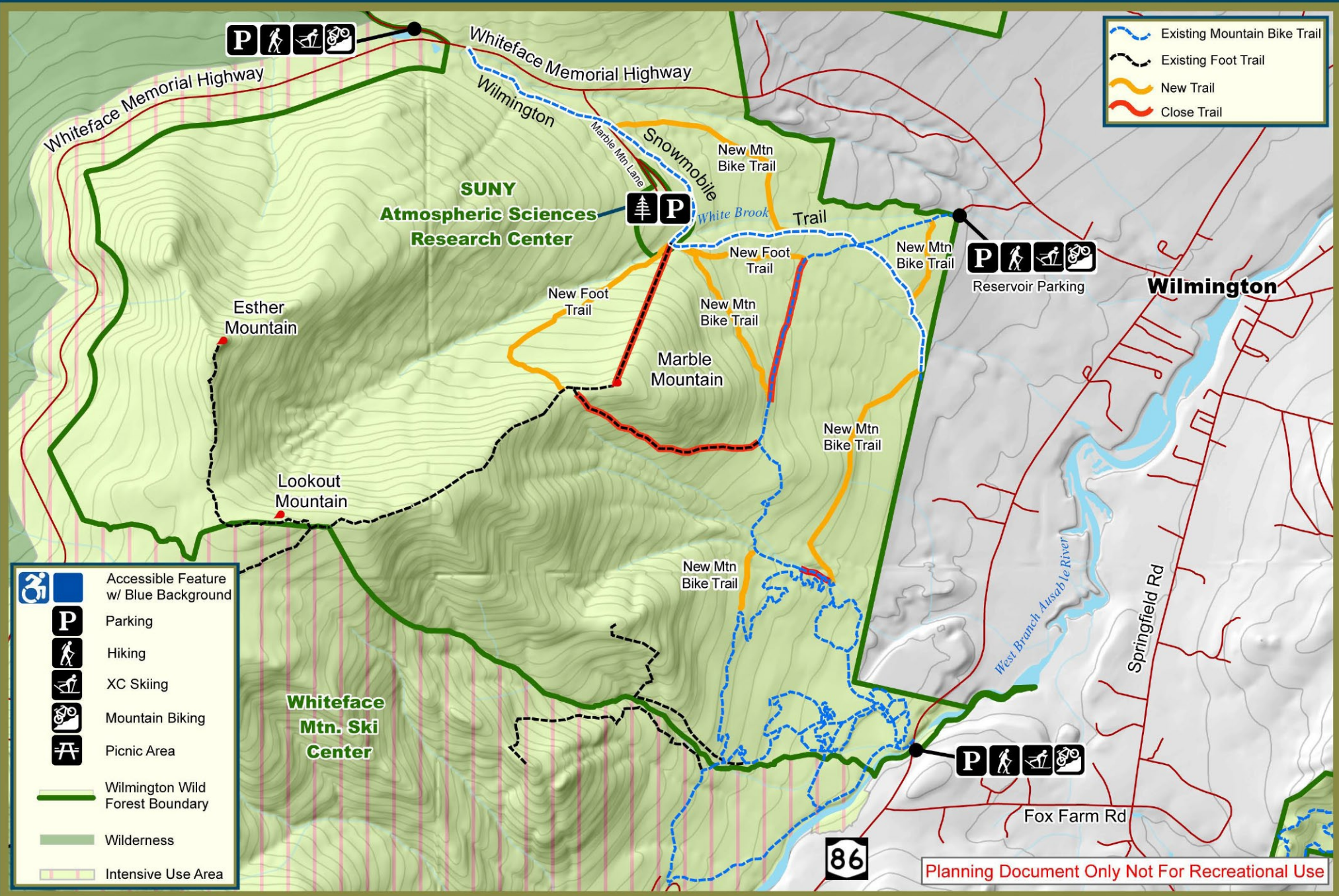
Draft 10-20-15

Raybrook Office: (518)897-1200



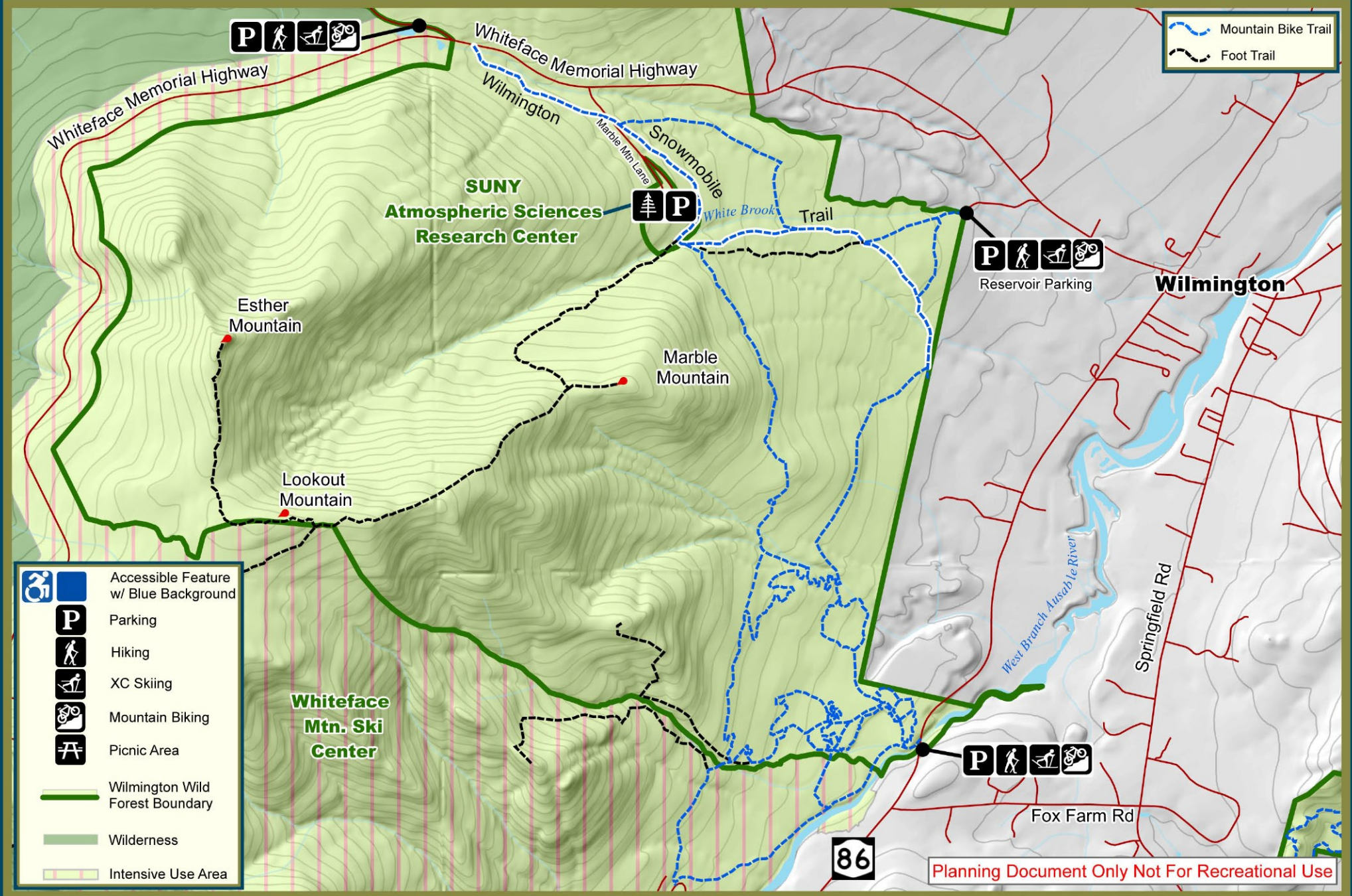


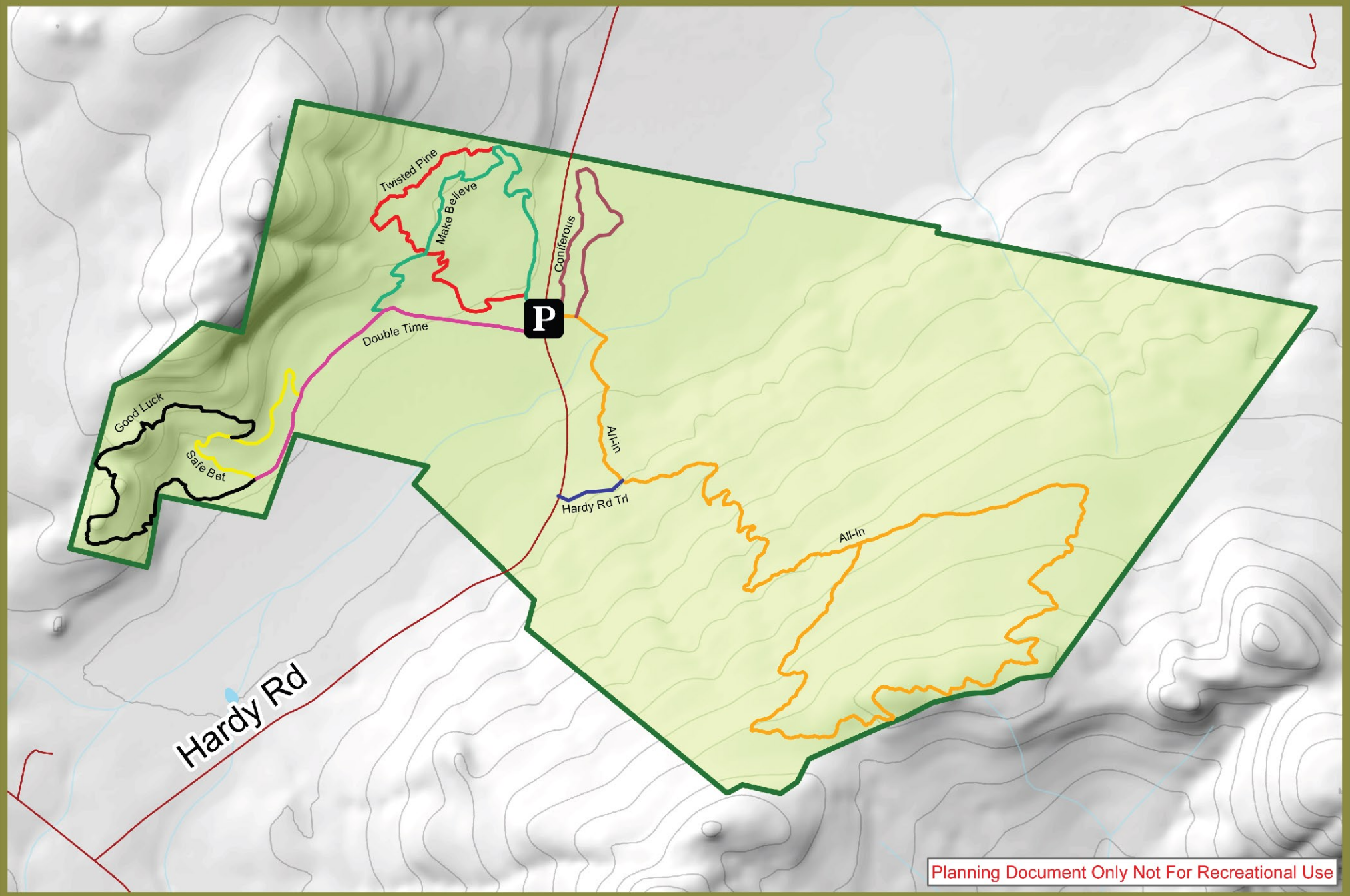




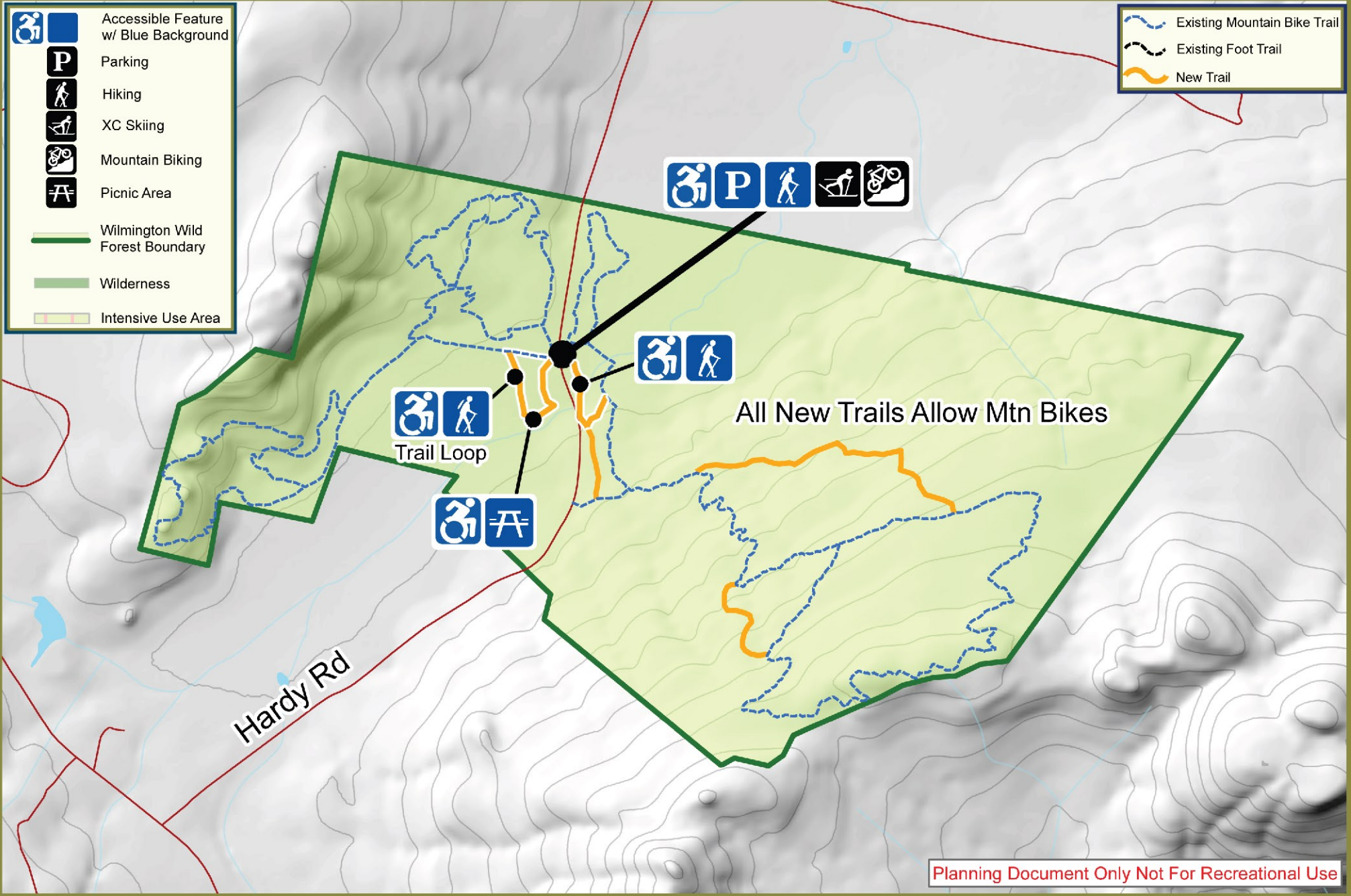
Planning Document Only Not For Recreational Use

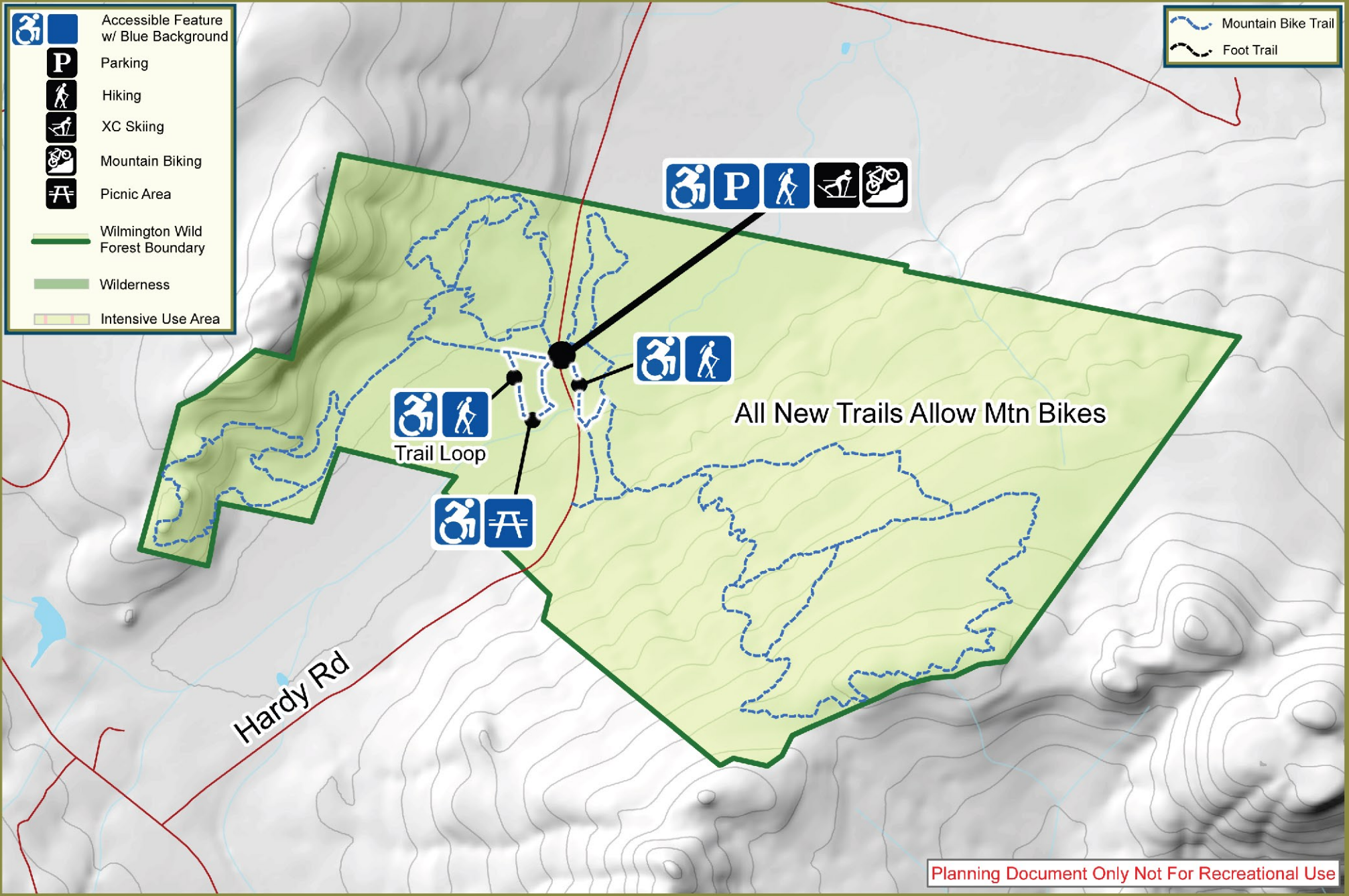






Planning Document Only Not For Recreational Use



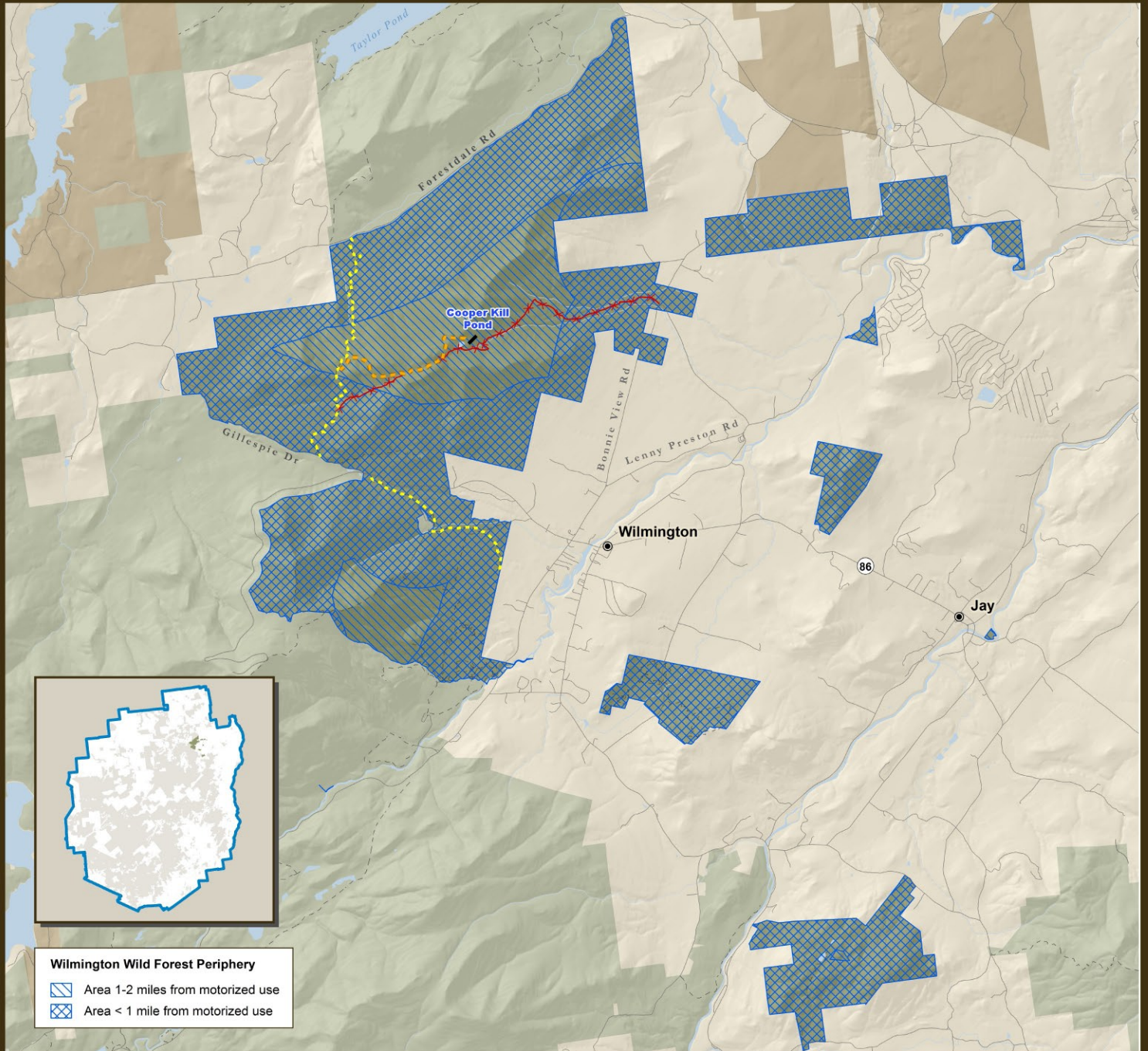


Map # 9

Adirondack Forest Preserve

Proposed Snowmobile Trail System




WILMINGTON WILD FOREST



Wilmington Wild Forest Periphery

-  Area 1-2 miles from motorized use
-  Area < 1 mile from motorized use

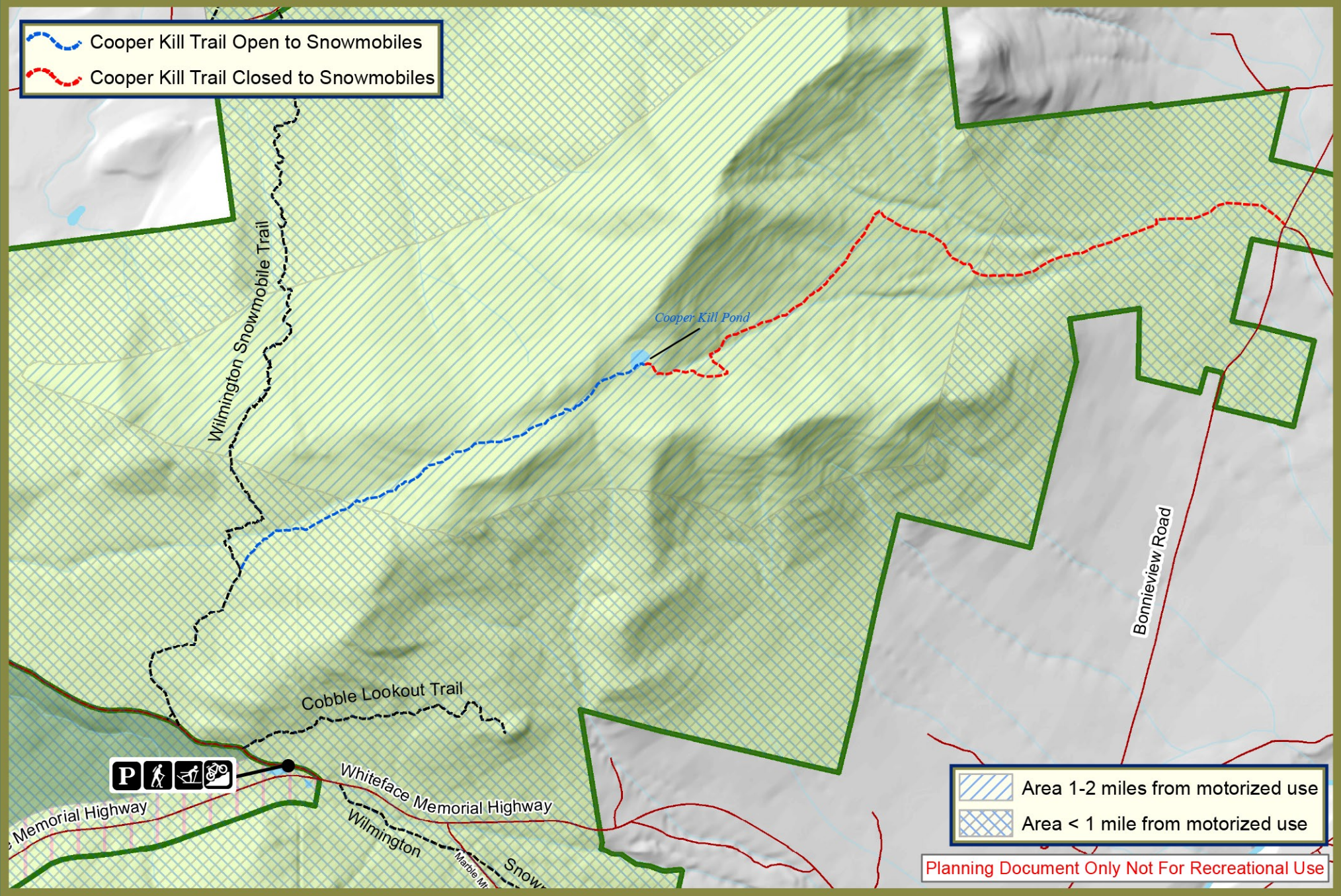
Forest Preserve Snowmobile Trails

-  Class II snowmobile trail
-  Class I snowmobile trail
-  Trail or road on which snowmobile use to be discontinued

-  Wilmington Wild Forest
-  Other DEC land
-  DEC conservation easement
-  Other road
-  Other trail

April 2015



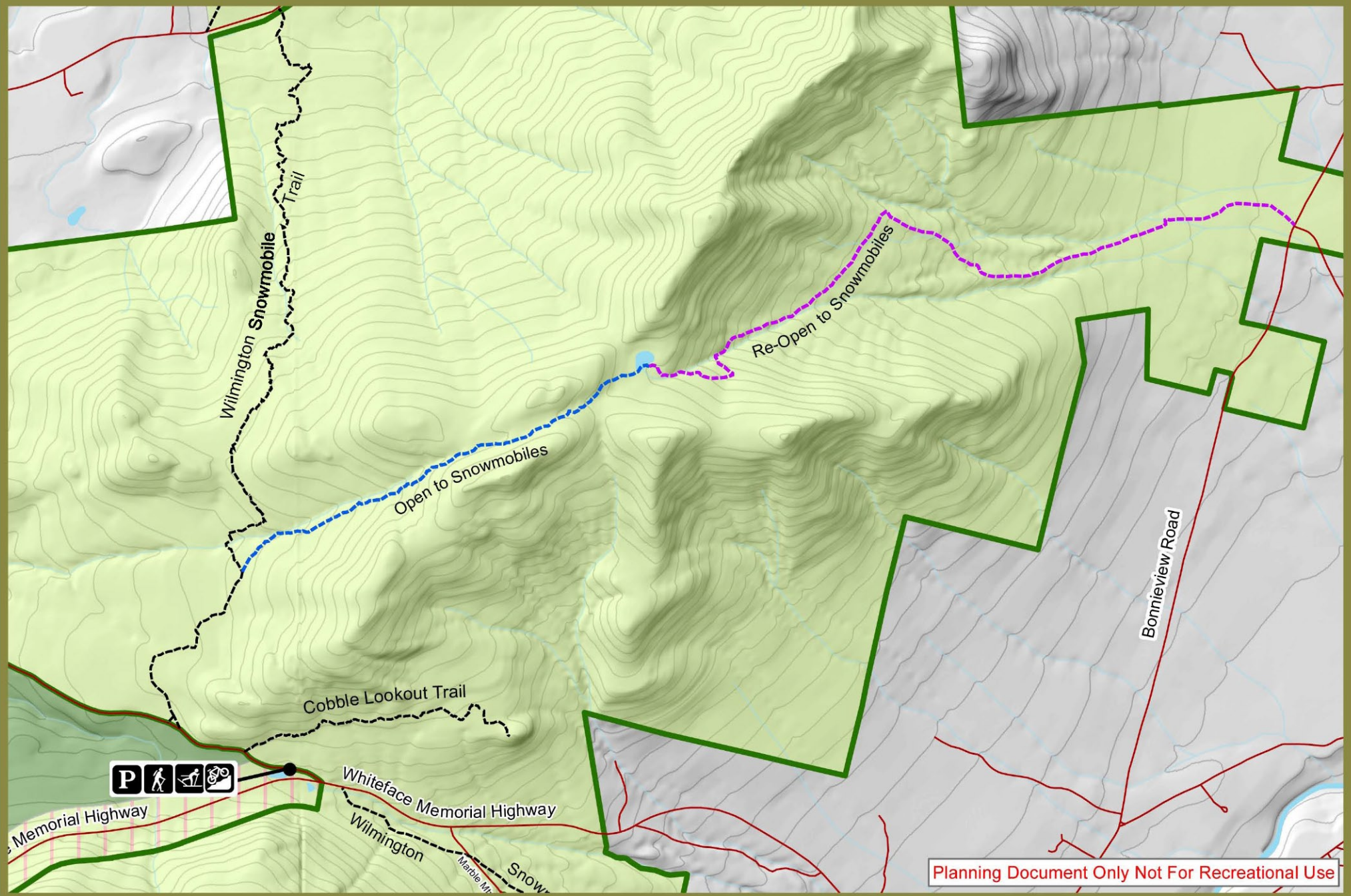


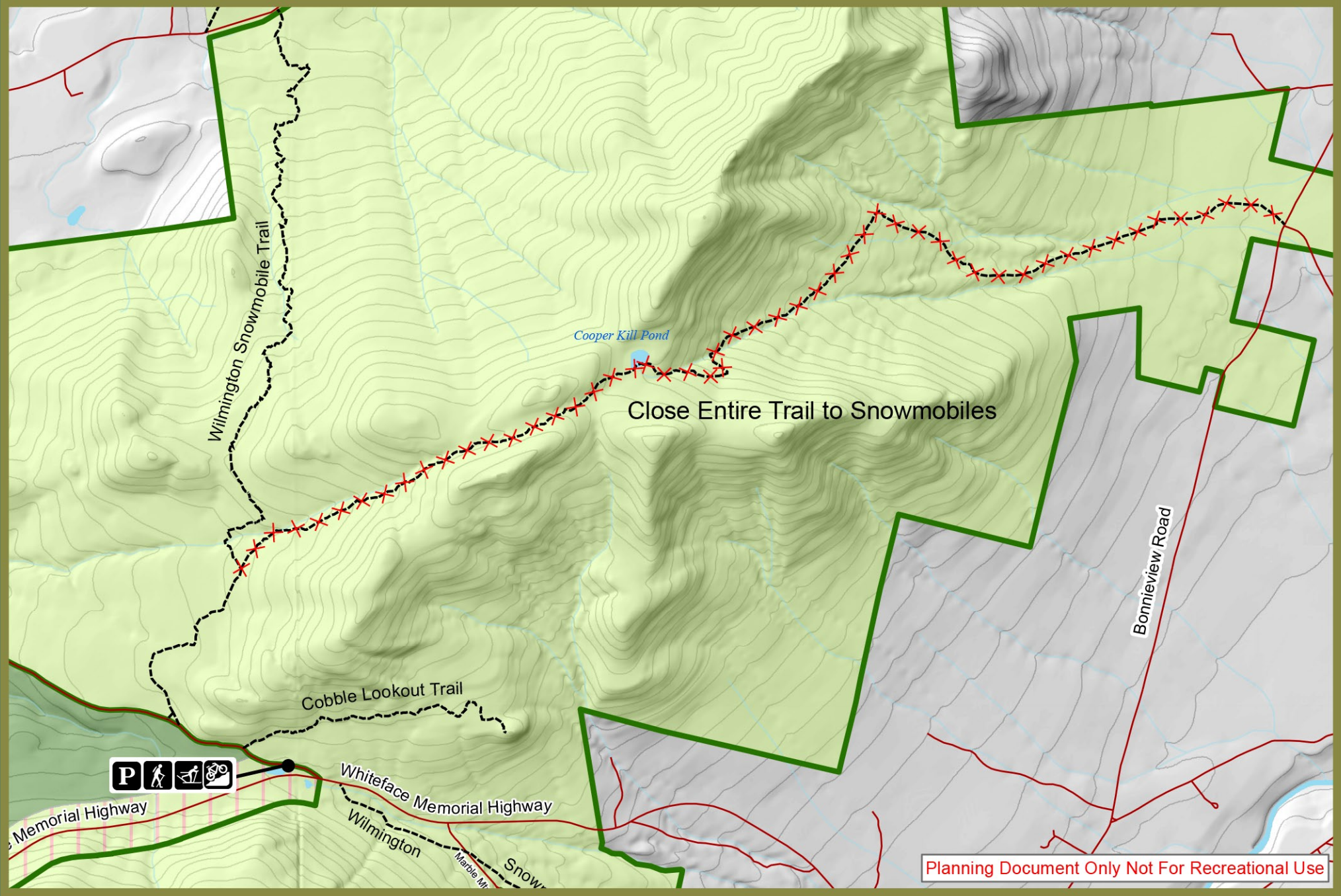
Cooper Kill Trail Open to Snowmobiles
Cooper Kill Trail Closed to Snowmobiles

Area 1-2 miles from motorized use
Area < 1 mile from motorized use

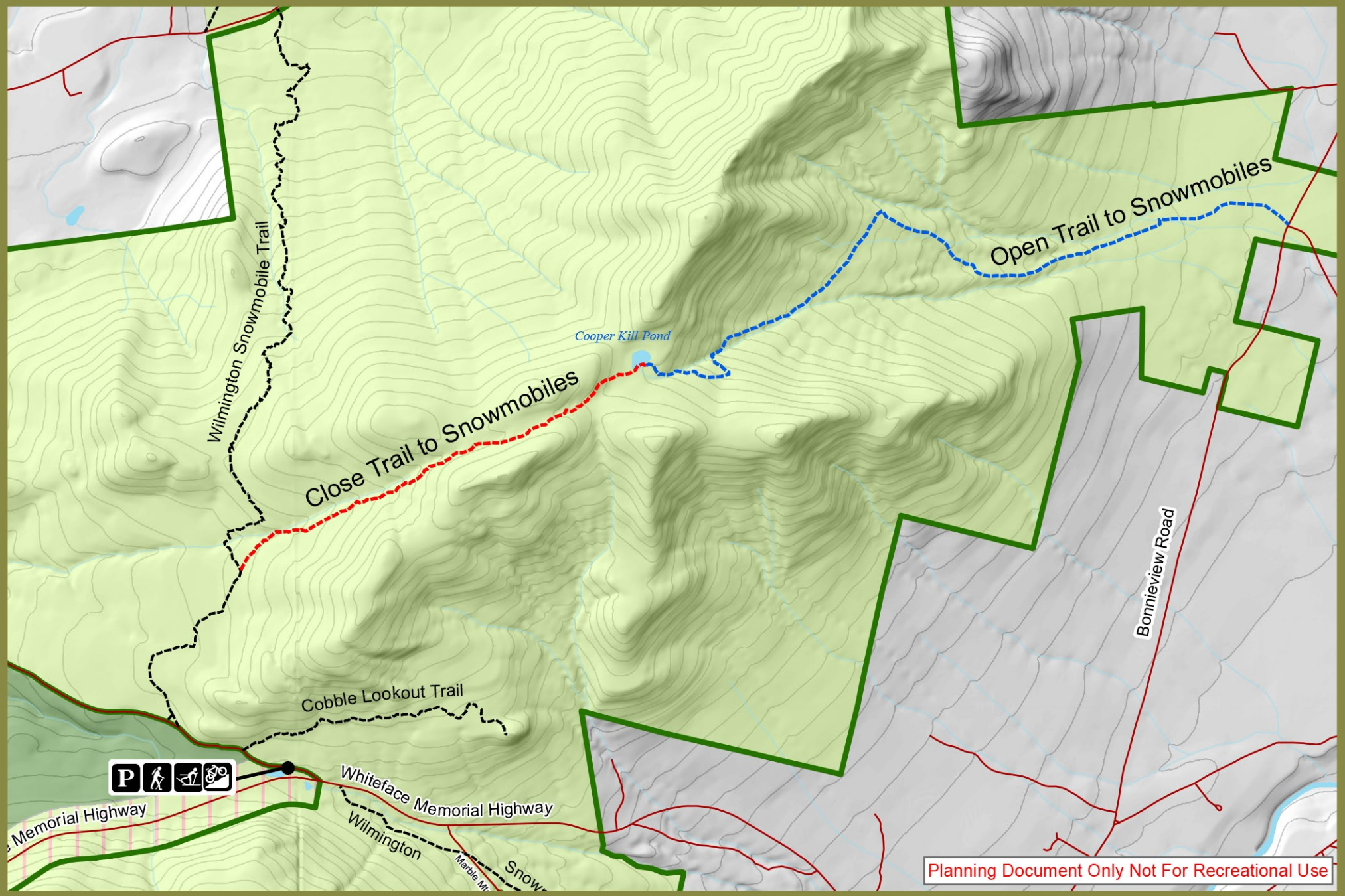
Planning Document Only Not For Recreational Use

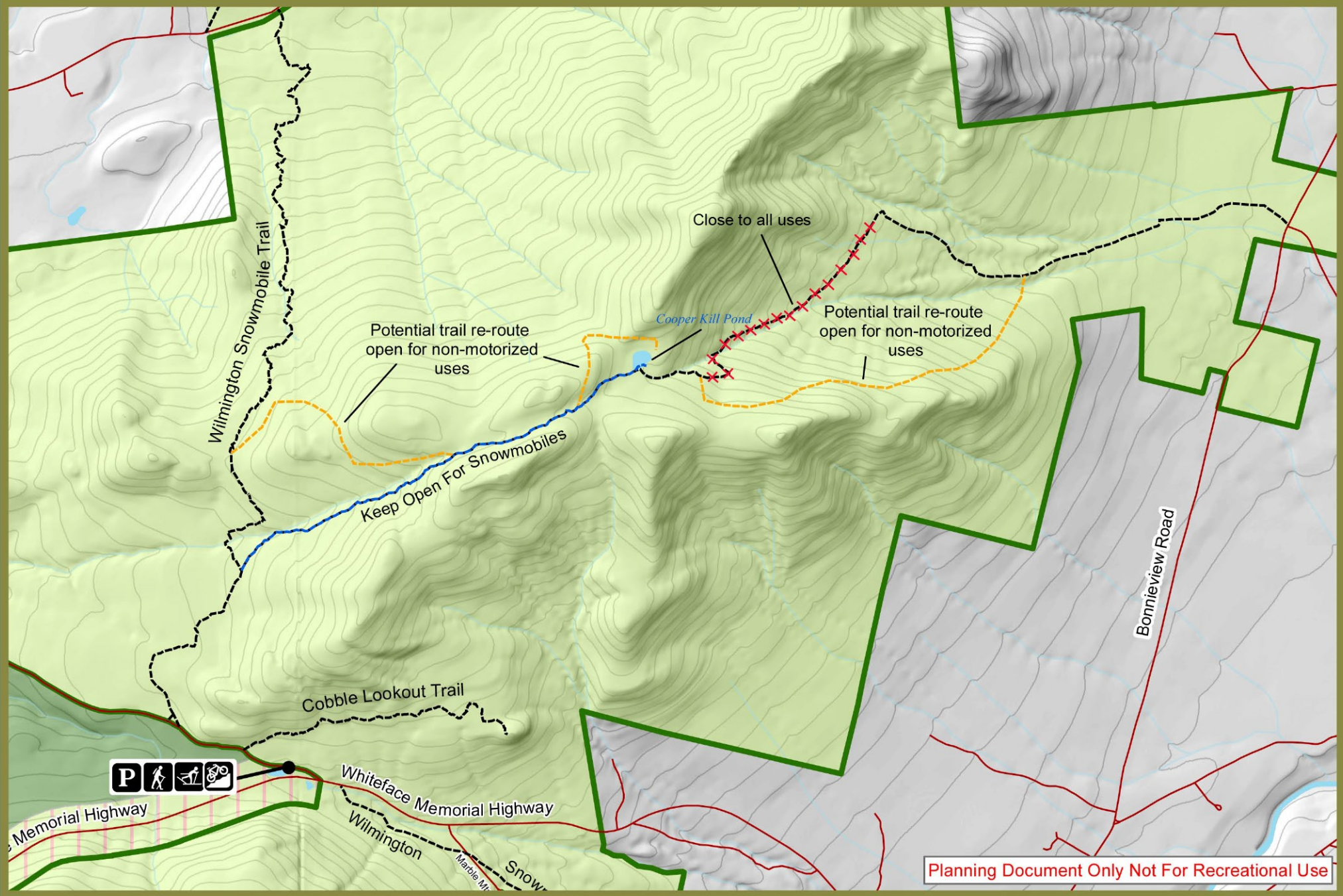


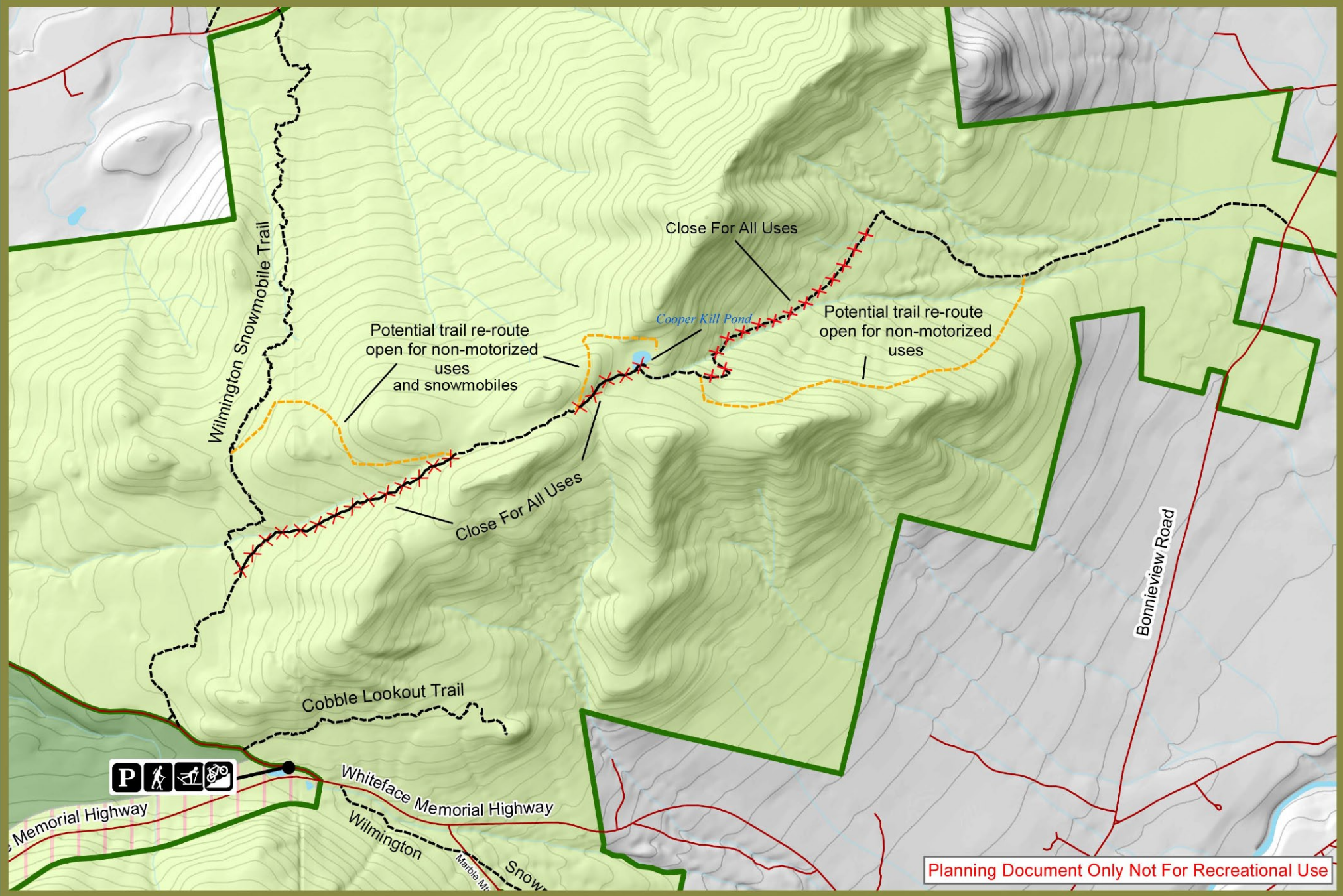




Planning Document Only Not For Recreational Use







Planning Document Only Not For Recreational Use